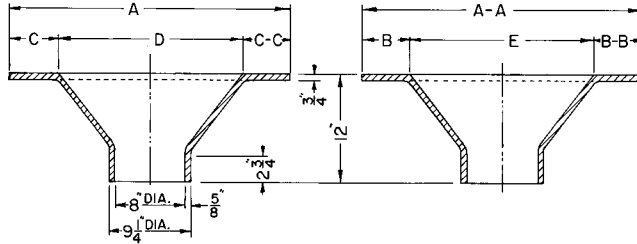


**R-3223 Series
Cast Iron Sub-Basin Bowl**

Heavy Duty

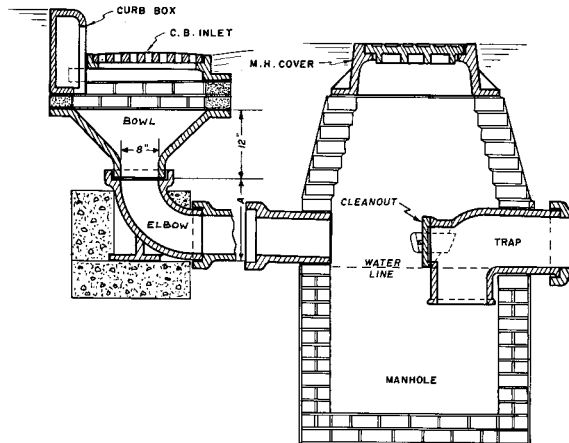


Dimensions in inches

Catalog No.	A	A-A	B	B-B	C	C-C	D	E
R-3223	37 3/4	35	5 1/4	5 1/4	3 1/2	5 1/4	29	24 1/2
R-3223-A	37	31	5 1/4	5 1/4	5 1/4	5 1/4	20 1/2	20 1/2
R-3223-B	31	31	5 1/4	5 1/4	5 1/4	5 1/4	20 1/2	20 1/2

**R-3226 Series
Catch Basin Elbow**

Heavy Duty

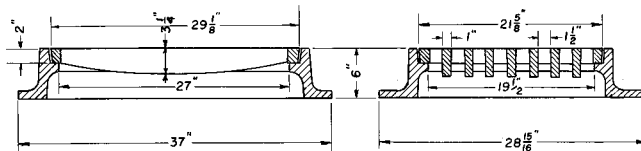


Section showing one method of catch basin assembly. Note catch basin frame, grate, curb box, catch basin bowl and elbow. See R-3705 series for catch basin trap detail.

Catalog No.	Elbow Height "A"
R-3226-A	12 1/2
R-3226-B	20

**R-3227
Expressway Inlet, Frame, Grate**

Heavy Duty



CATALOG NUMBER	GRATE TYPE	SQ. FT. OPEN	WEIR PERIMETER LINEAL FEET
R-3227	D	2.3	8.5